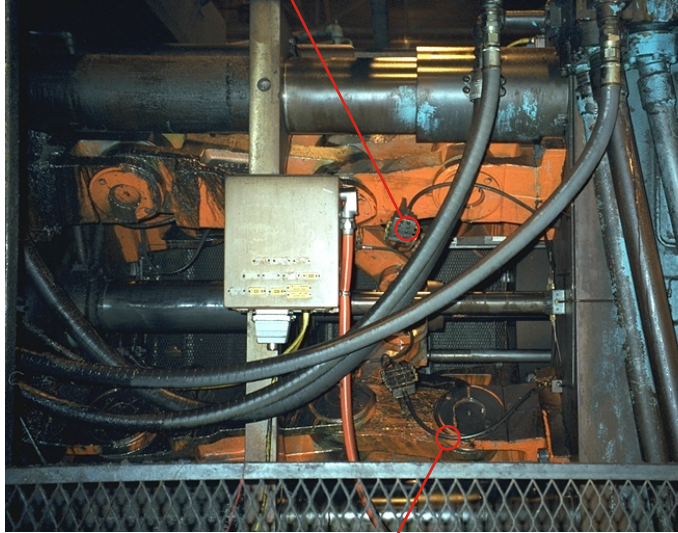


LUBE BLOCK

RESERVOIR



LINK
LUBE HOSE



PUMP

TASK: 6M17 - DIECASTER LINK LUBE SYSTEM CHECK

STEPS

1. CYCLE TRABON LINK LUBE PUMP, OBSERVE PRESSURE GAUGE FOR POSSIBLE PROBLEMS IN SYSTEM
2. CHECK FOR PROPER AIR PRESSURE TO TRABON LUBE PUMP
3. CHECK FOR PROPER LUBE IN RESERVOIR
4. CHECK PUMP FOR PROPER LUBE OUTPUT PER CYCLE
5. CHECK FOR BLOWN DISC ON TRABON PUMP
6. HOOKUP PORTABLE POWER LUBE UNIT TO CHECK SYSTEM
7. VISUAL CHECK FOR BROKEN LUBE LINES, HOSES, SWIVEL FITTINGS, & LEAKS AROUND LUBE BLOCKS
8. MAKE NEEDED REPAIRS NOW

FREQUENCY

4 WEEKS